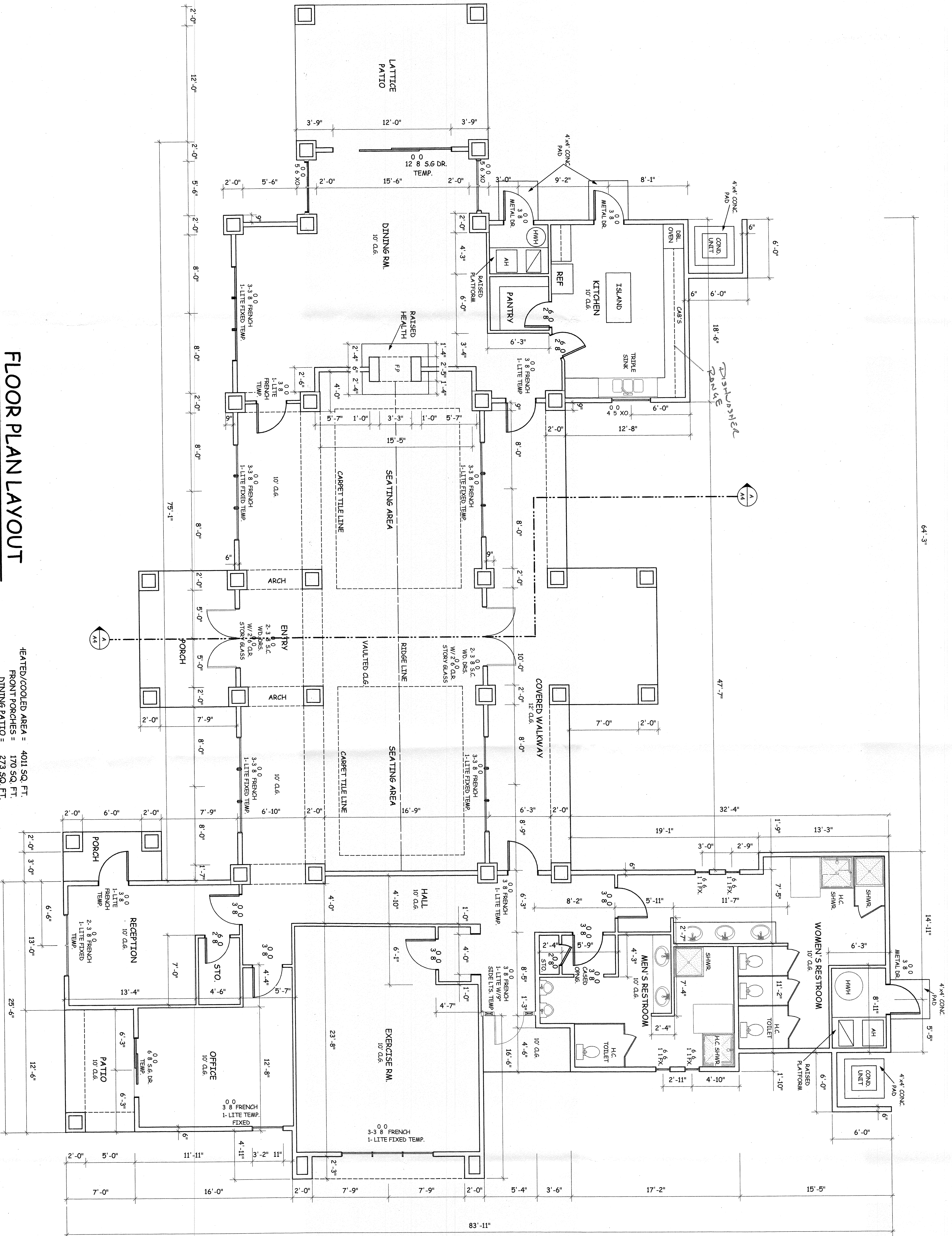


# Canoa Preserve










**HORN & DESIGNS, INC.**  
 (480) 994-4998  
 NORMAN L. BRYAR  
 ARCHITECT  
 P.O. BOX 3644  
 SCOTTSDALE, AZ. 85271

CLUBHOUSE FOR THE  
 CANOA PRESERVE DEVELOPMENT  
 CANOA PRESERVE GREEN VALLEY, AZ.

REVISIONS	BY

SHEET  
**A2**  
 OF SHEETS  
 S.H. BRYAR  
 CHECKED  
 OCT 2005  
 1/4" SCALE 1/4" = 1'-0"

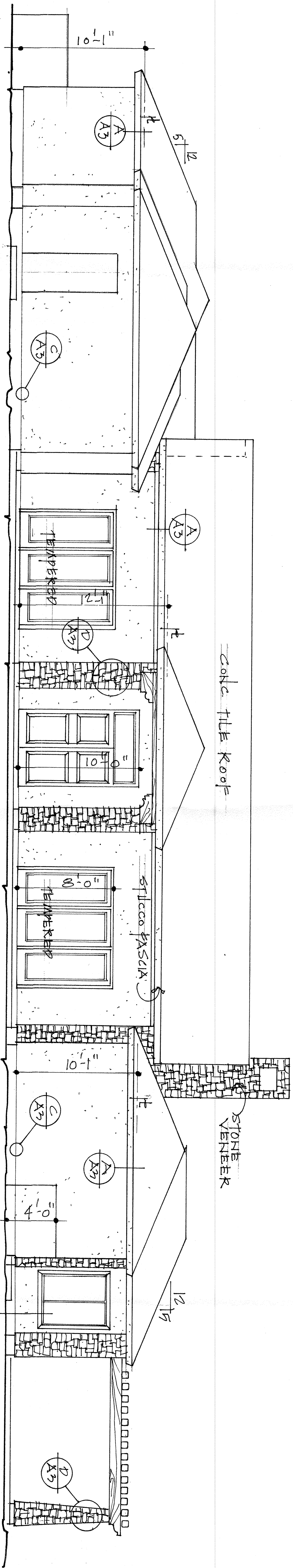


**HORN**  **DESIGNS, INC.**  
(480) 994-4998  
NORMAN L. BRYAR  
ARCHITECT  
P.O. BOX 3644  
SCOTTSDALE, AZ. 85271

REGISTERED ARCHITECT  
 CERTIFICATE NO.  
 9591  
 NORMAN LEON  
 BRYAR  
 Date Signed .....  
 ARIZONA, U.S.A.

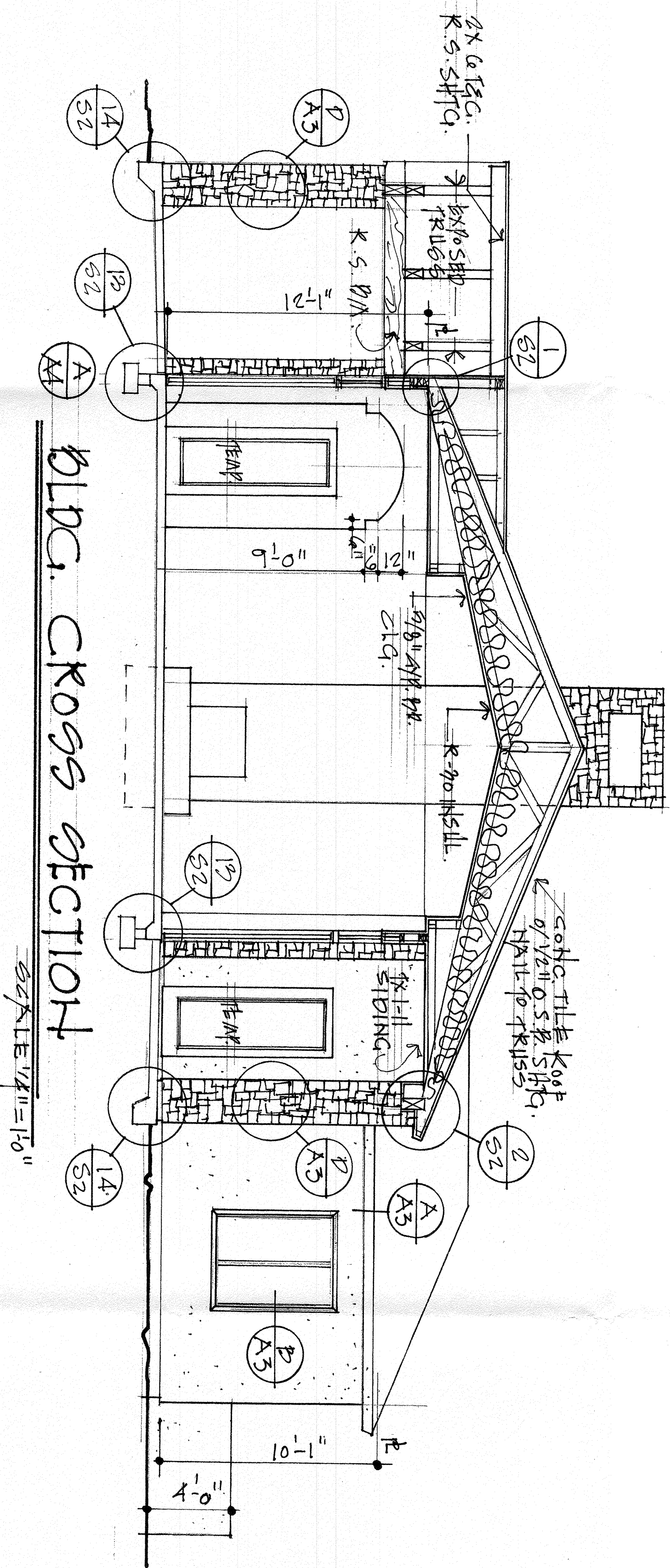
DRAWN  
S. FORK N.  
CHECKED  
DATE  
OCT. 2005  
1" SCALE 1" = 10'  
JOB NO.





# REAR ELEVATION

SCALE 1/4"=1'-0"



# BLDG. CROSS SECTION

SCALE 1/4"=1'-0"

CLUBHOUSE FOR THE  
CANOA PRESERVE DEVELOPMENT  
CANOA PRESERVE GREEN VALLEY, AZ.

**HORN & DESIGNS, INC.**  
( ) 994-4998  
NORMAN L. BRYAR  
ARCHITECT  
P.O. BOX 3644  
SCOTTSDALE, AZ. 85271

REVISIONS	BY

DATE	06-15-2005
CHECKED	1/4"=1'-0"
DESIGNED	1/4"=1'-0"
BY	1/4"=1'-0"
SHEET	1/4"=1'-0"
SHEETS	1/4"=1'-0"



[illegible][illegible]

2. SILL PLATE BOLTING SUBSTITUTIONS:  
THE FOLLOWING SUBSTITUTIONS MAY BE MADE FOR THE 1/2" DIAMETER ANCHOR BOLTS ABOVE

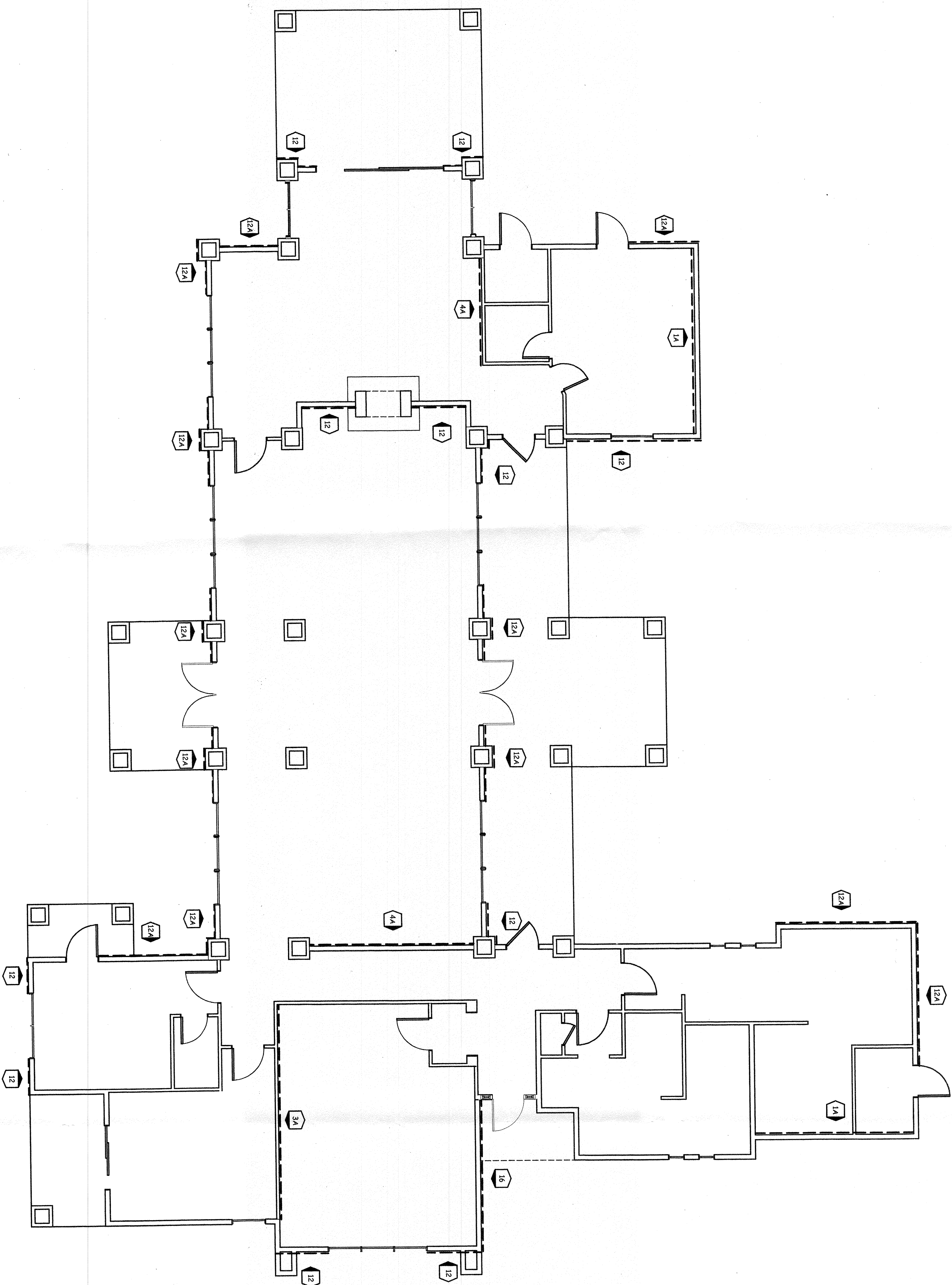
**ALL INTERIOR WALLS**  
1/2" dimension wedge anchors (ICBO approved) 2-1/4" min. embed at stress spacing.

**ALL EXTERIOR AND/OR INTERIOR WALLS**  
1/2" dimension square anchors (ICBO approved) 2-1/4" min. embed at stress spacing.  
Minimum net epoxy (no adhesive penetration) for all anchors of specified inspection was used.

**INTERIOR GROUND WALLS/RETAINING WALLS ONLY**  
H80 and X-200 Ties at stress spacing as the 1st wall plate nailing indicated for 2nd floor condition indicated in notes was substituted for 1st floor condition indicated in notes was substituted.

**Notes:**  
Notes indicated tie table are common nails. 15d anchors may be substituted for 16d common nails but placed at 0.87x times the spacing.

SCALE 3/16" = 1'-0"



Fax (480) 946-1909

P.O.BOX 3644  
SCOTTSDALE, AZ. 85271

ty

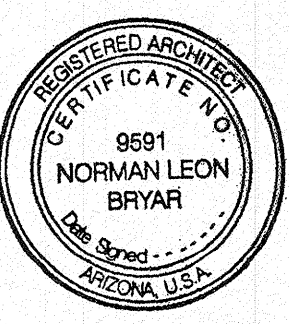
1

OF SHEET



REVISIONS	BY

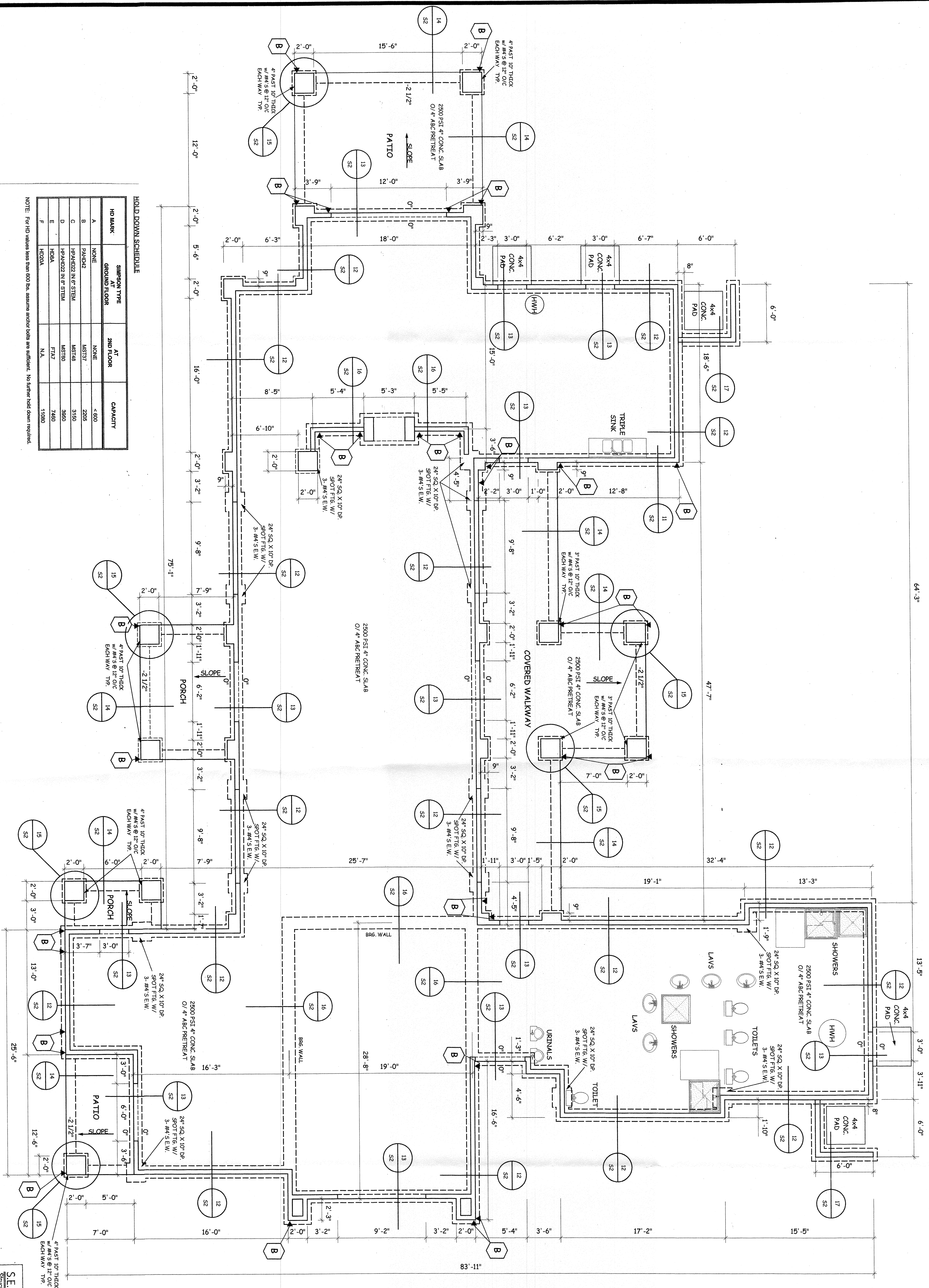
**HORN & DESIGNS, INC.**  
 (480) 994-4998 P.O. BOX 3844  
 NORMAN L. BRYAR SCOTTSDALE, AZ. 85271  
 ARCHITECT



CLUBHOUSE FOR THE  
 CANOA PRESERVE DEVELOPMENT  
 CANOA PRESERVE GREEN VALLEY, AZ.

**SE CONSULTANTS, Inc.**  
 Structural Engineering Consultants  
 5800 East Thomas Road, Suite 104  
 Scottsdale, AZ 85251  
 (480) 946-2010  
 Fax (480) 946-1909

**51**



**HOLD DOWN SCHEDULE**

HD MARK	SIMPSON TYPE	AT GROUND FLOOR	AT 2ND FLOOR	CAPACITY
A	NONE	NONE	NONE	< 800
B	PAH02	N/A	MS13	2205
C	HPAH02	N/A	MS14	3150
D	HPAH02	N/A	MS10	3980
E	HB04	N/A	FLAT	7480
F	HD04	N/A	N/A	11880

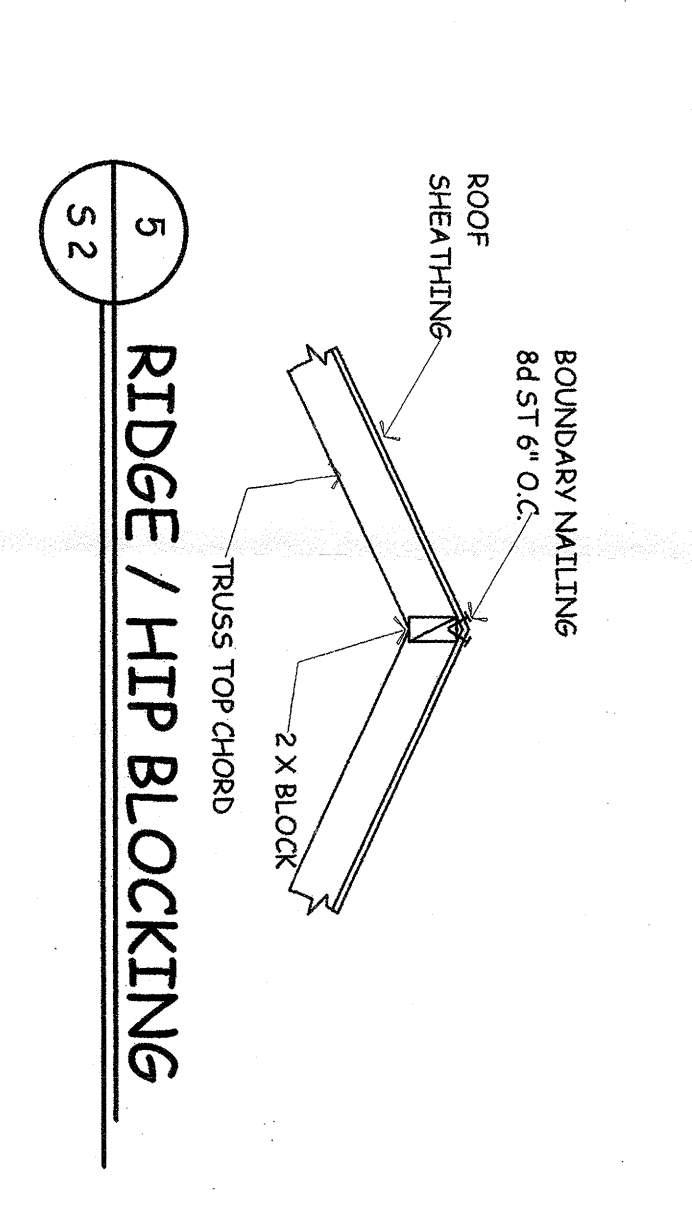
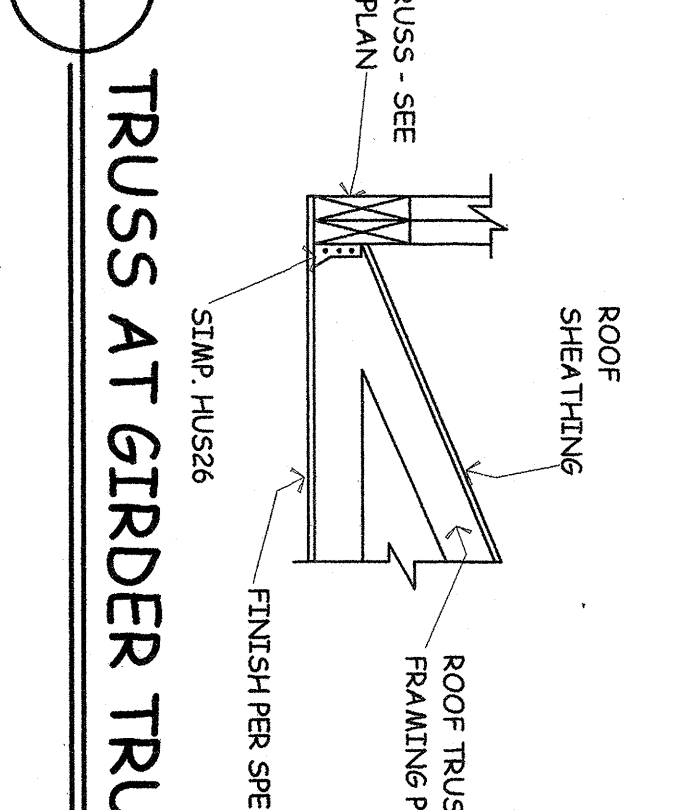
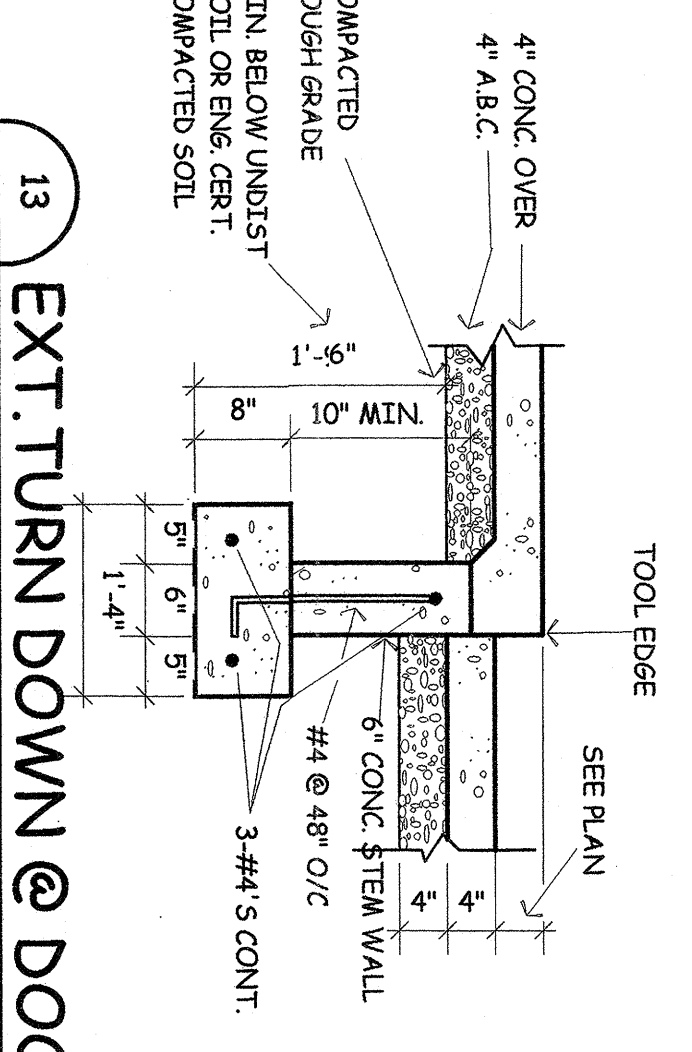
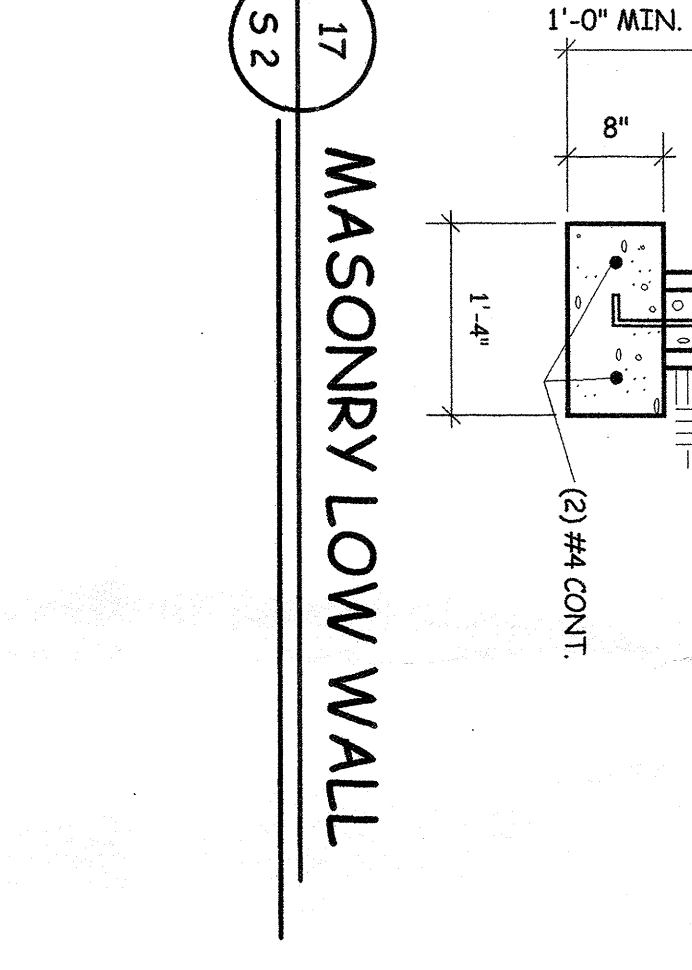
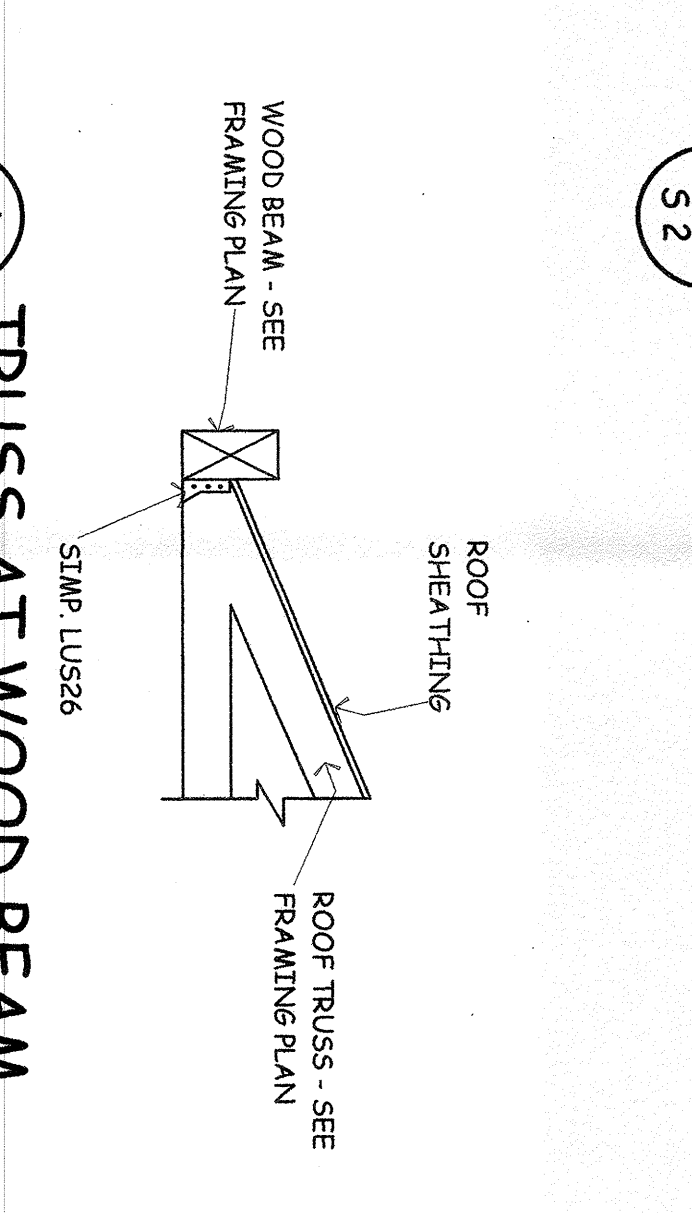
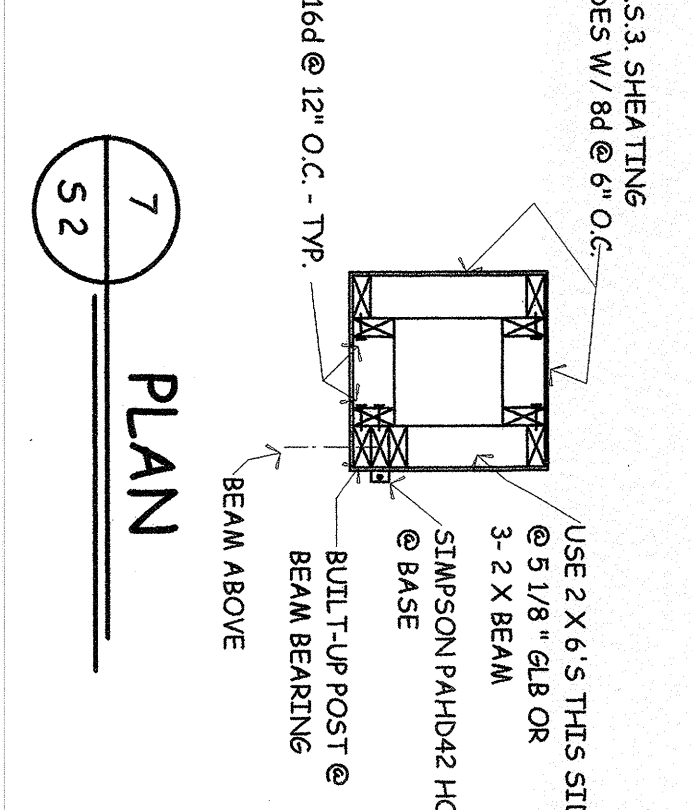
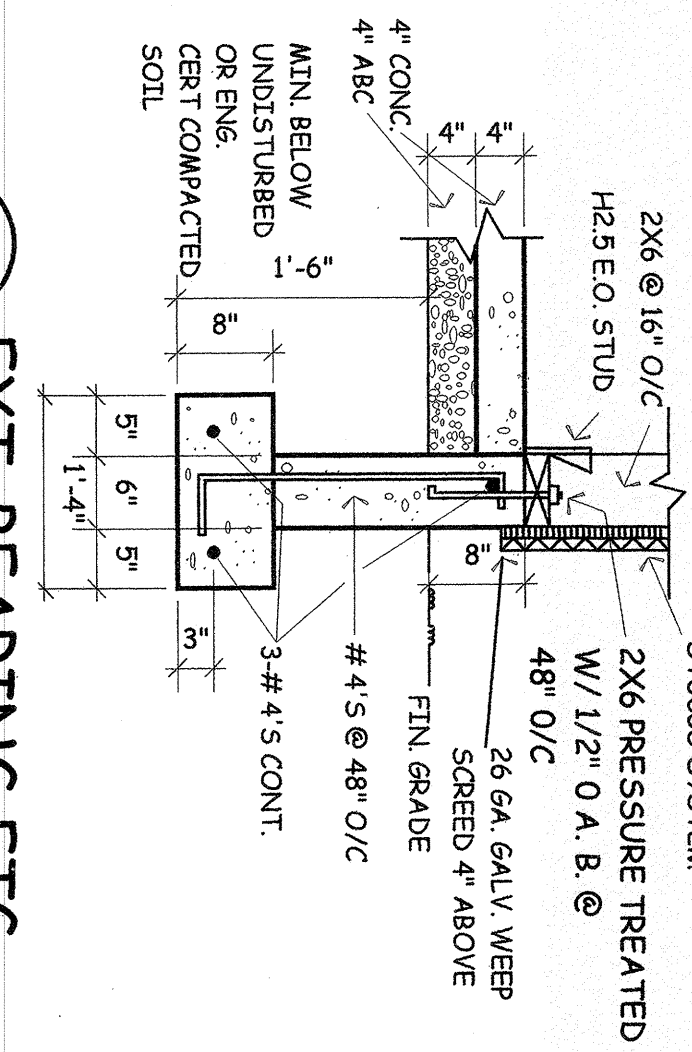
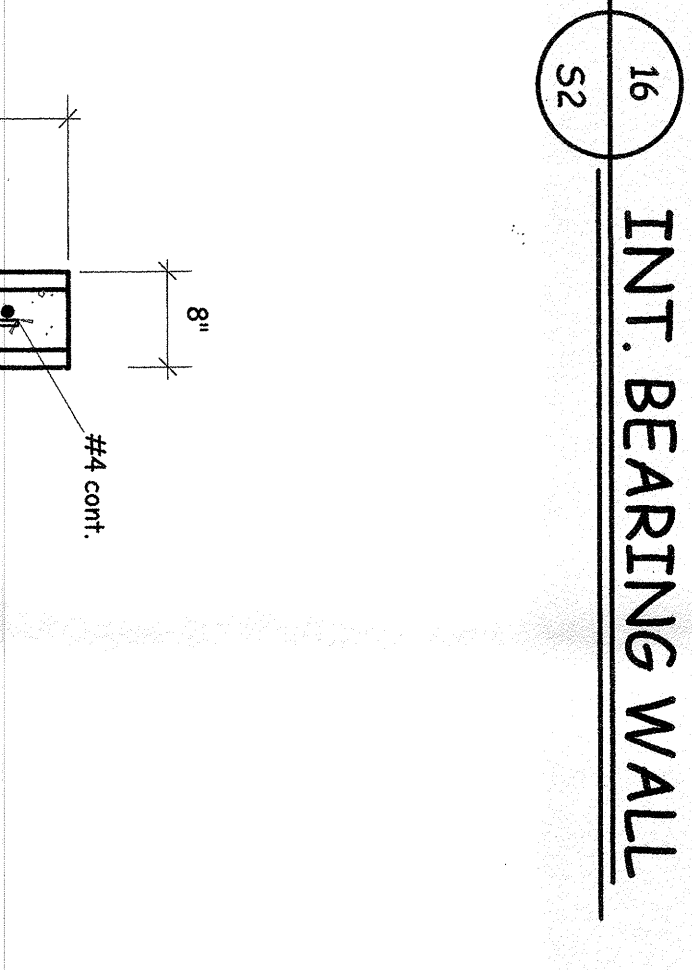
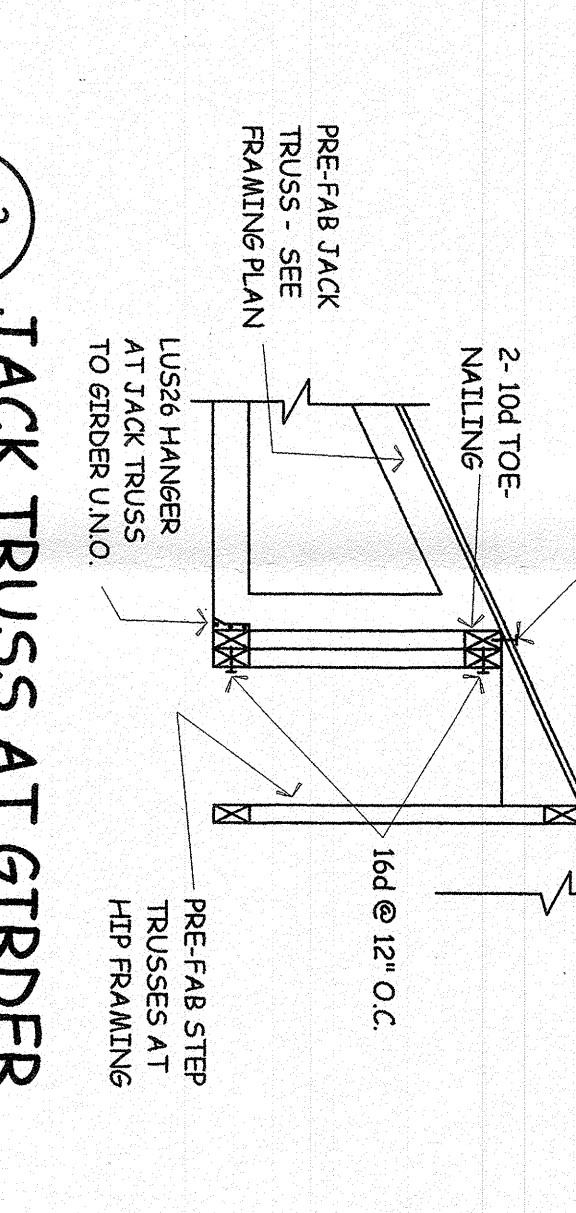
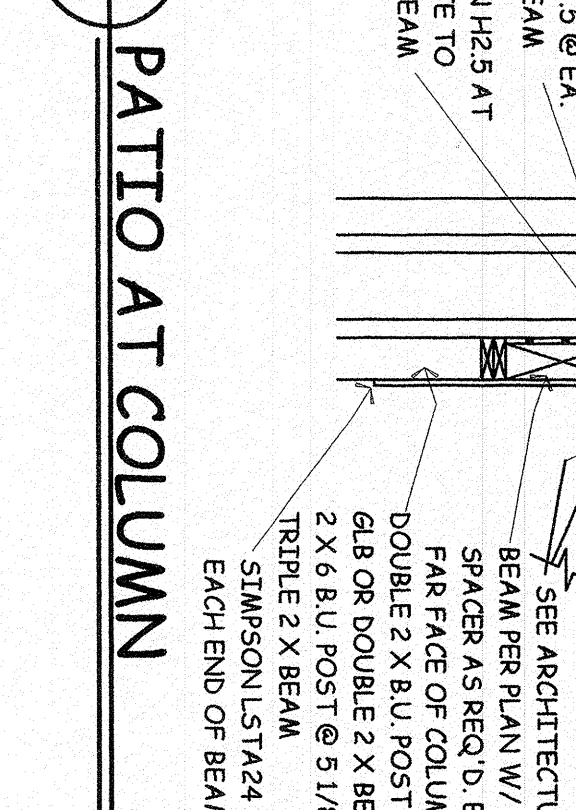
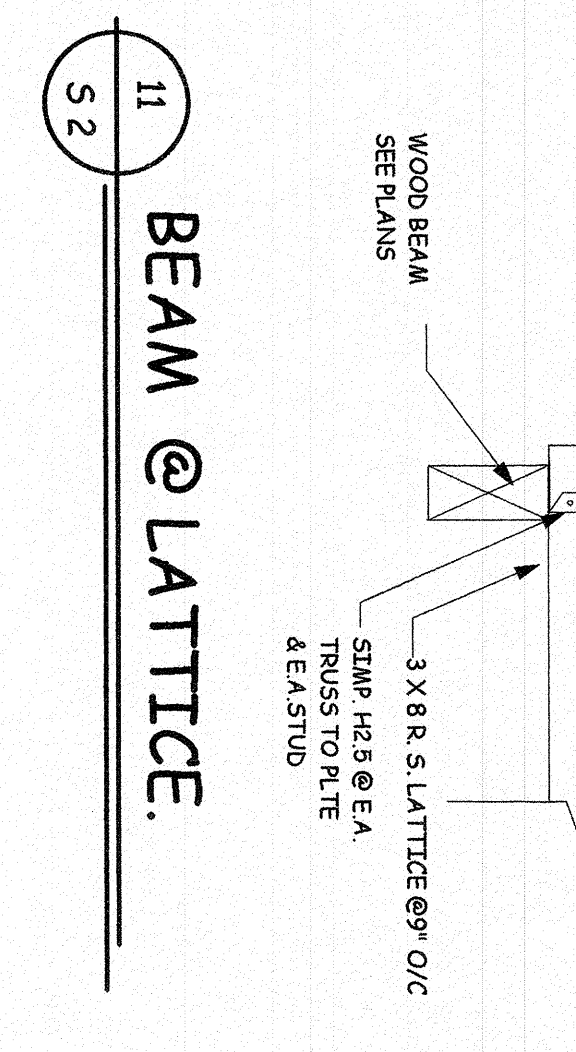
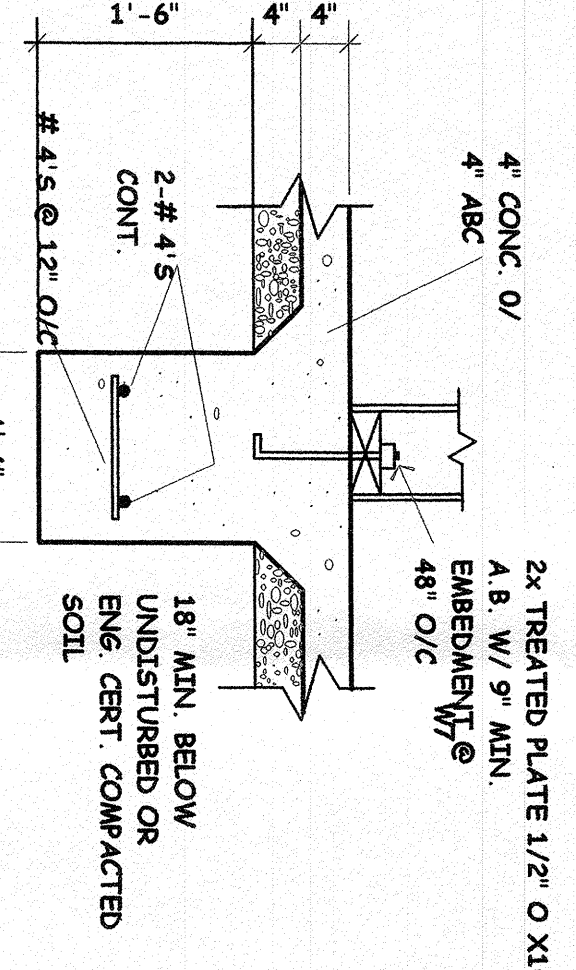
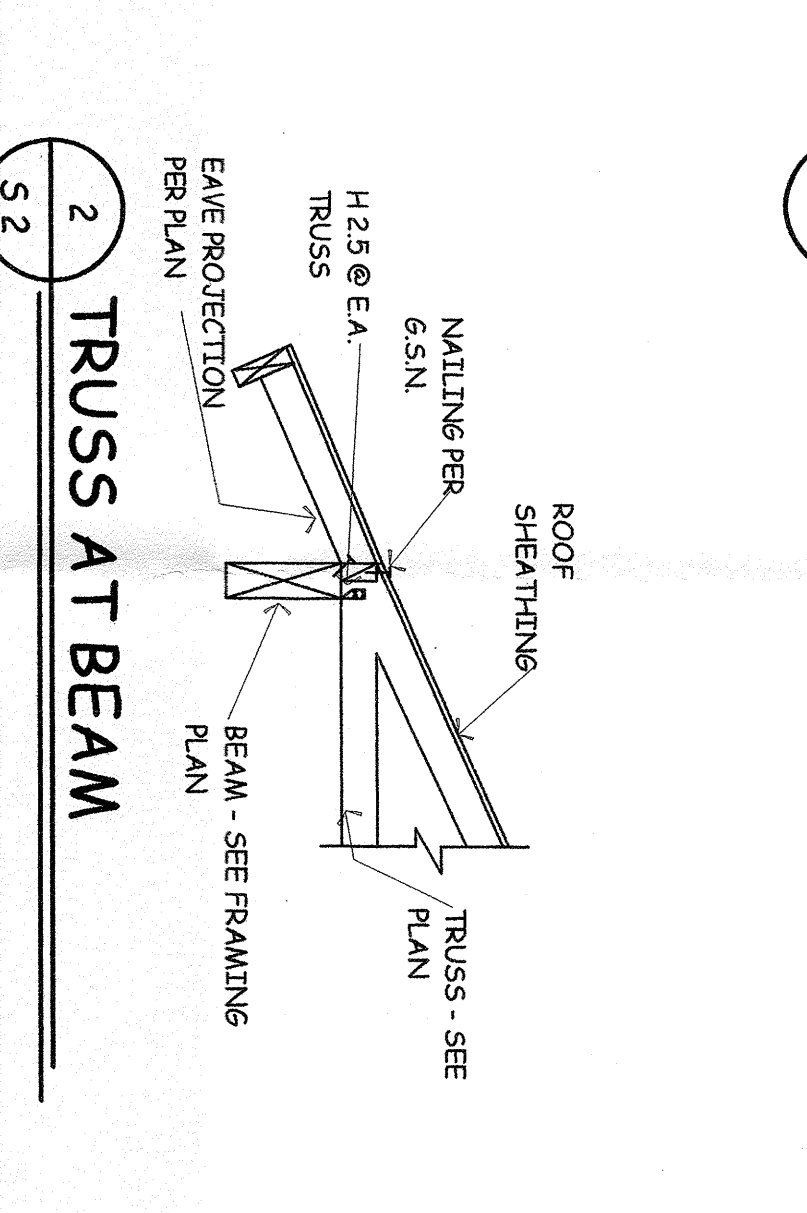
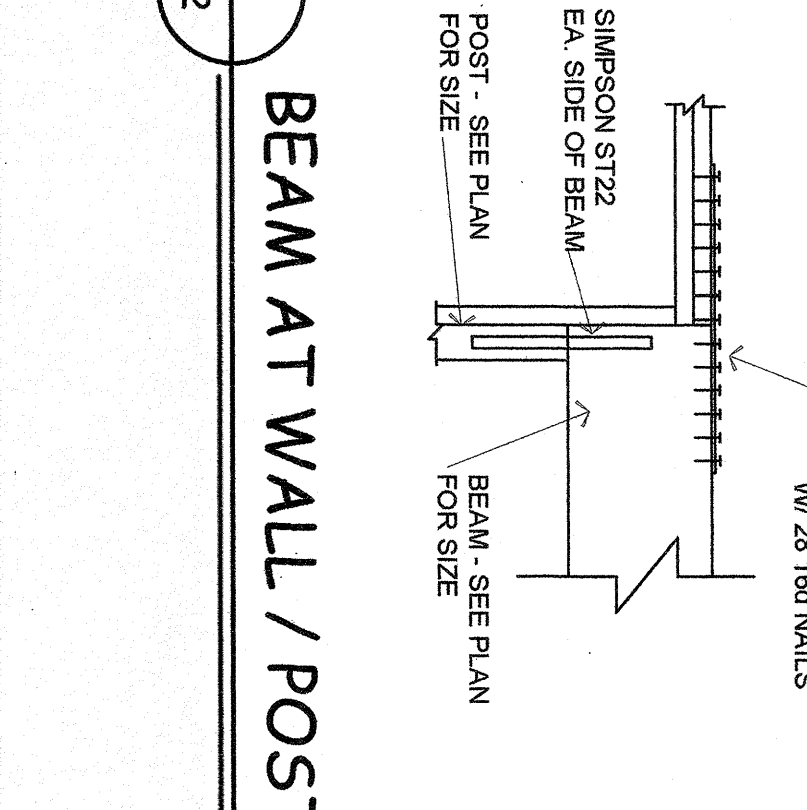
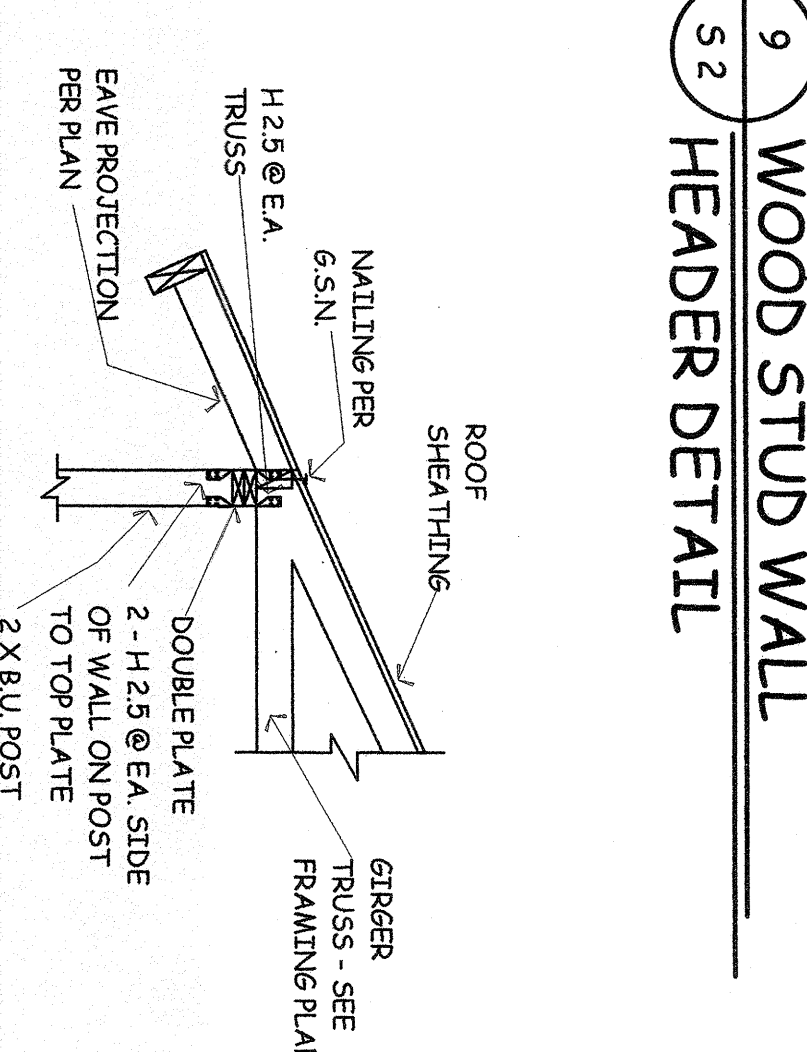
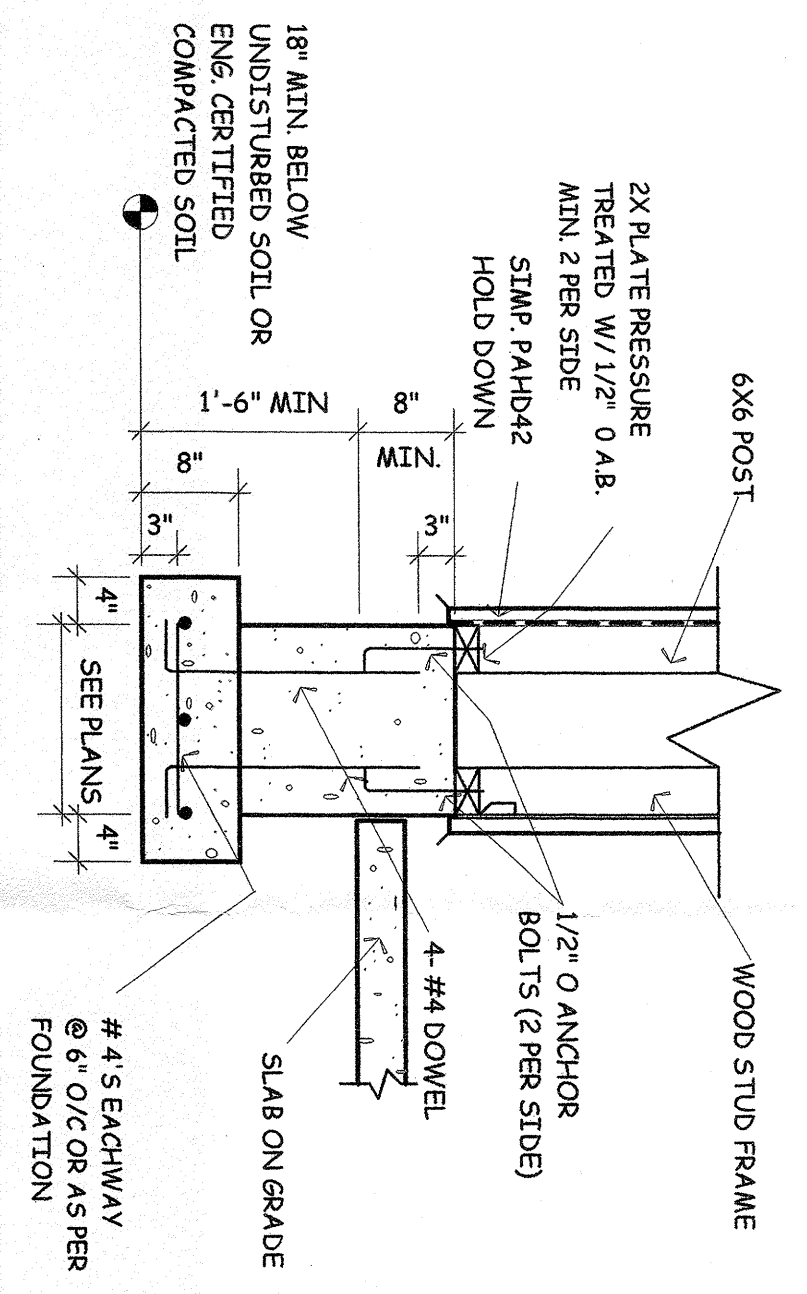
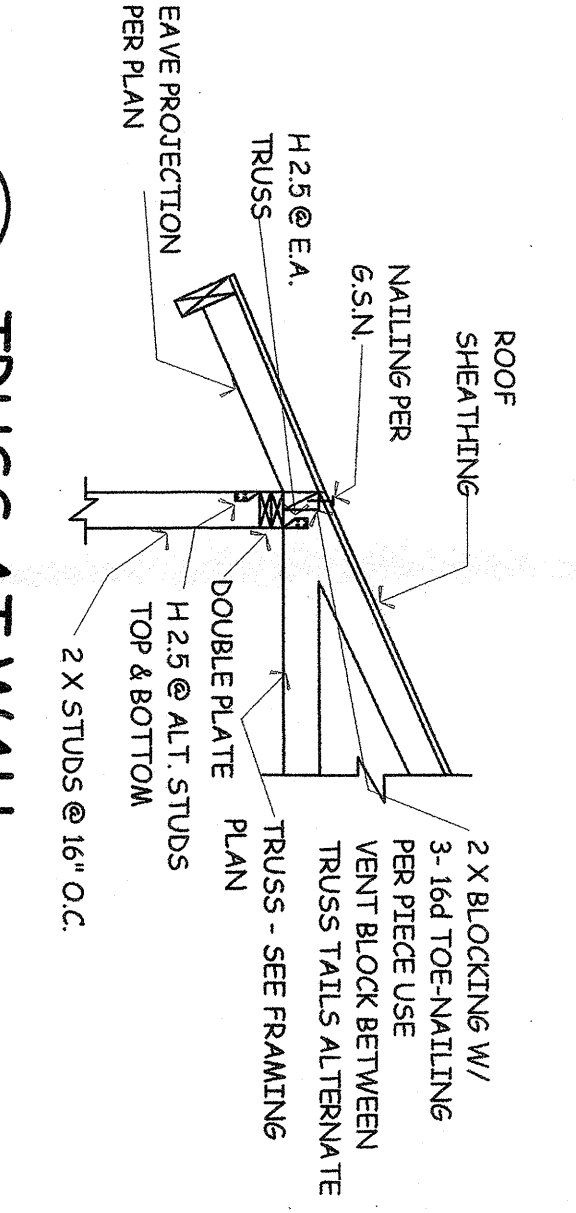
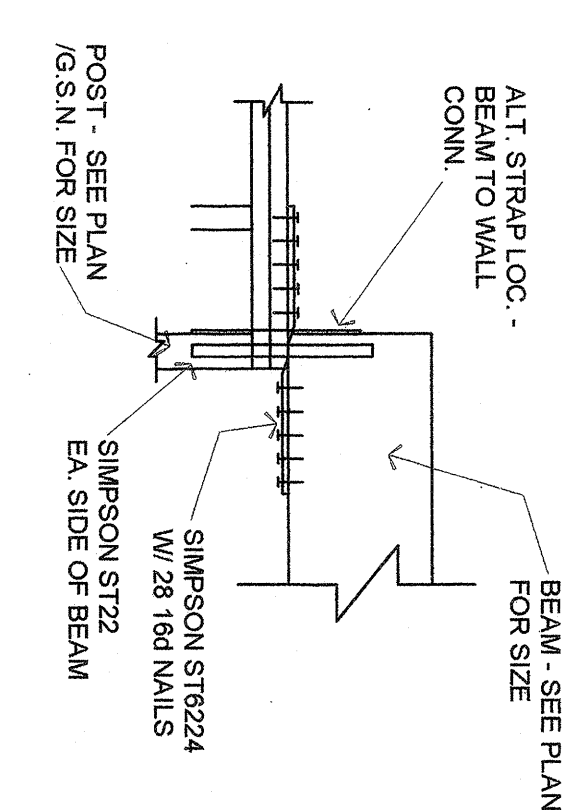
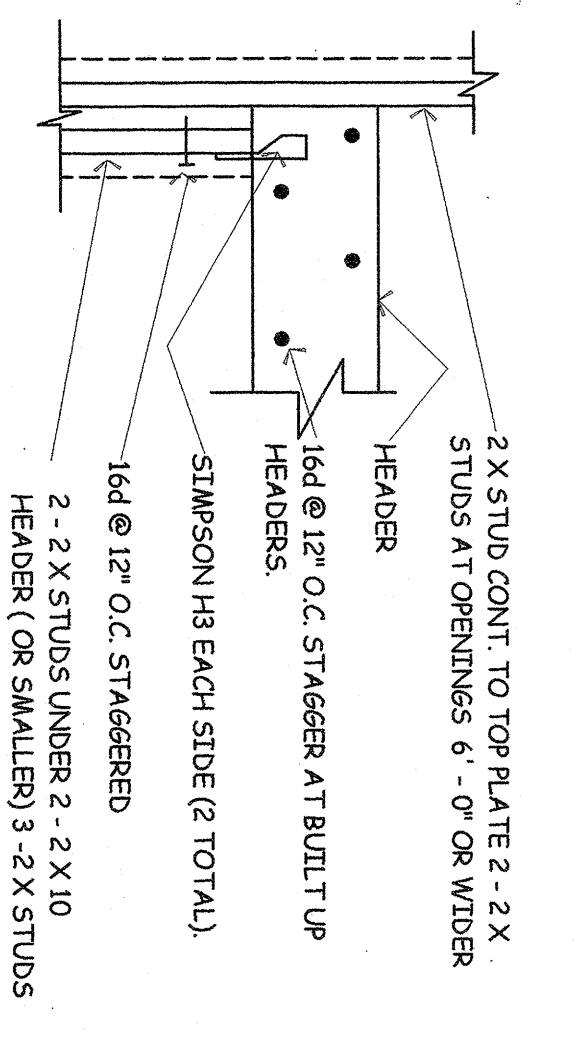
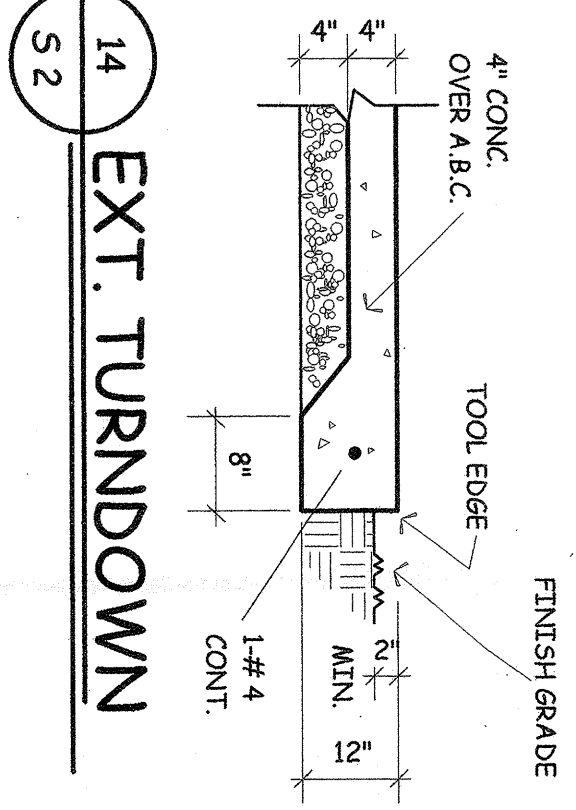
NOTE: For HD values less than 800 lbs. assume anchor bolts are sufficient. No further hold down required.

**FOUNDATION PLAN**

SCALE 1/4" = 1'-0"



REVISIONS	BY



CLUBHOUSE FOR THE  
CANOA PRESERVE DEVELOPMENT  
CANOA PRESERVE GREEN VALLEY, AZ.

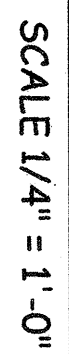


**HORN & DESIGNS, INC.**  
(480) 994-4998  
NORMAN L. BRYAR  
ARCHITECT  
P.O. BOX 3644  
SCOTTSDALE, AZ. 85271

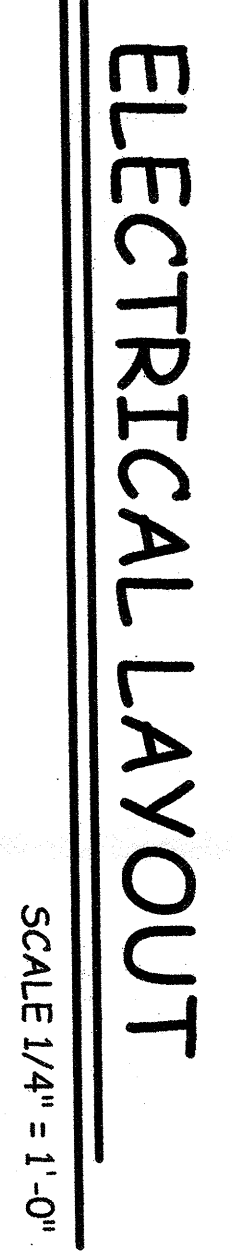
SHEET  
52  
JAN. 2006  
JOB NO.  
SHEET



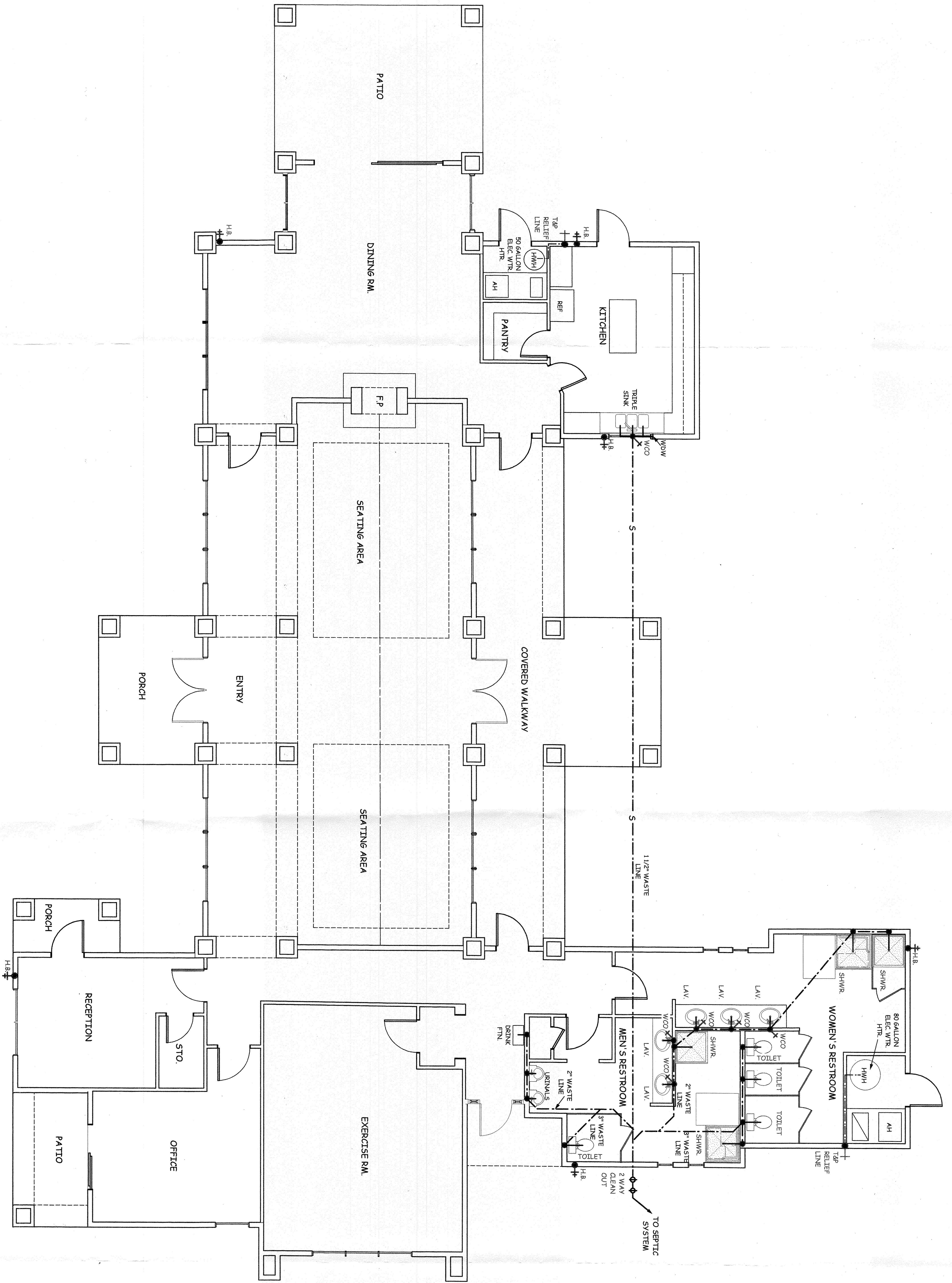
SCALE 1/4" = 1'-0"











# PLUMBING LAYOUT

SCALE 1/4" = 1'-0"

CLUBHOUSE FOR THE  
CANOA PRESERVE DEVELOPMENT  
CANOA PRESERVE GREEN VALLEY, AZ.



**HORN DESIGNS, INC.**  
(480) 994-4998  
P.O. BOX 3644  
SCOTTSDALE, AZ. 85271  
NORMAN L. BRYAR  
ARCHITECT

REVISIONS	BY

5.4.2.12

CHECKED

DATE

05.1.2005

1/4" SCALE 1" = 10'

SHEET

JOB NO.

91

OF SHEETS